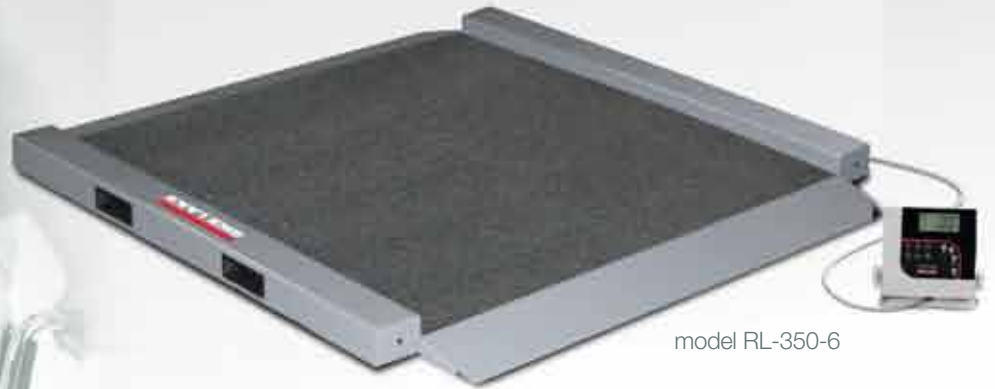


# wheelchair scales

model 350-10-3



model RL-350-6



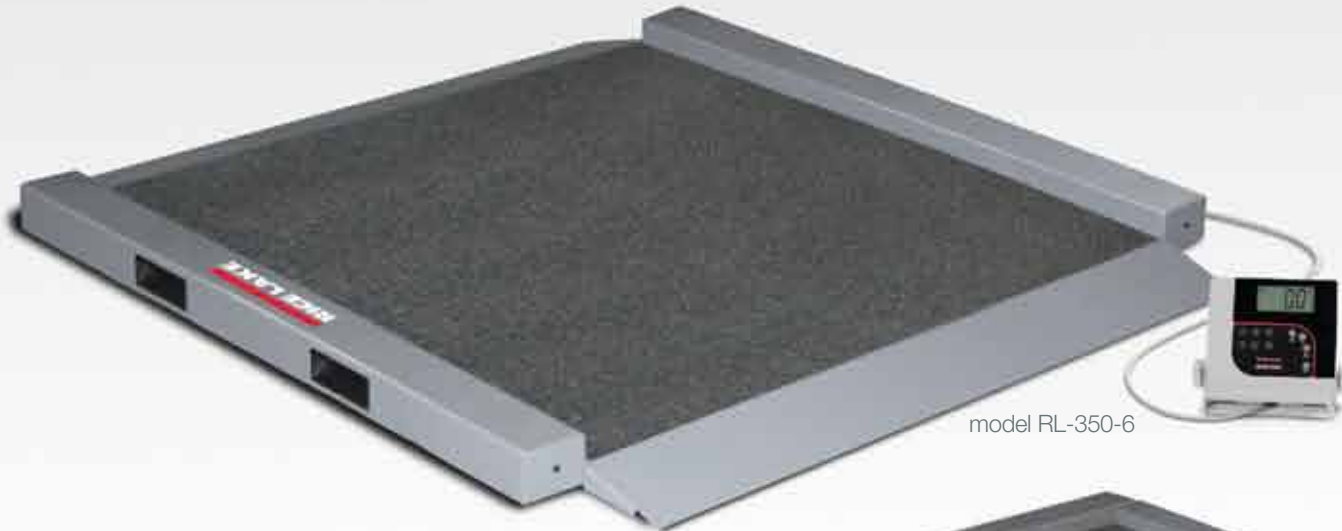
**RICE LAKE**<sup>®</sup>  
HEALTH SOLUTIONS

To be the best by every measure<sup>®</sup>



# Rice Lake **wheelchair** scales

RICE LAKE offers a full lineup of wheelchair scales from single ramp to dual ramp with chair. Each model is designed and built to weigh accurately, safely and dependably. Motiontrap™ adjusts for involuntary movement and keyboard tare efficiently reduces errors and patient transfers. Smart designs make these scales easy to move, maintain and store.



model RL-350-6



model RL-350-5

<b>Capacity</b>	1000lb (450kg)
<b>Graduations</b>	0.2lb (0.1kg)

## Model RL-350 Series Standard Features



- Capacity: 1000lb x 0.2lb (450kg x 0.1 kg)
- Platform weighing dimensions: 34 in x 34 in
- Anti-slip rubber surface on platform
- Integral handles and wheels for ease of portability
- Motiontrap (movement compensation technology)
- Large 1 inch LCD display
- Ability to manually enter the tare weight of a wheelchair
- Hold function
- BMI (body mass index) function
- Unit of measure: lb only, kg only, lb/kg
- EMR capable, USB
- Powered by 6 AA batteries (included)
- 10 ft cable between scale base and indicator

### RL-350-5

- Single ramp

### RL-350-6

- Dual ramp

## Options/Accessories

- AC adaptor



*Indicator and cable secure to base for safer movement and storage.*



model 350-10-3

model 350-10-4



model 350-10-2

<b>Capacity</b>	1000lb (450kg)
<b>Graduations</b>	0.2lb (0.1kg)



**Model 350-10 Series**  
Standard Features



- Capacity: 1000lb x 0.2lb (450kg x 0.1kg)
- Platform weighing dimensions: 29.5 in x 32 in
- Two wheels for ease of portability
- Motiontrap (movement compensation technology)
- Large 1 inch LCD display
- Ability to manually enter the tare weight of a wheelchair
- BMI (body mass index) function
- Hold function
- Unit of measure: lb only, kg only, lb/kg
- Non-skid platform
- EMR capable, USB
- Powered by 6 AA batteries (included)

**Single Ramp Platform (Model 350-10-7)**

- 6.5ft cable between scale base and indicator
- Single ramp for on/off access

**Single Ramp Handrail (Model 350-10-2)**

- Single ramp for on/off access

**Dual Ramp Platform (Model 350-10-8)**

- 6.5ft cable between scale base and indicator
- Dual ramp

**Dual Ramp Handrail (Model 350-10-3)**

- Dual ramp

**Dual Ramp Handrail with Seat (Model 350-10-4)**

- Includes padded, fold-away chair with back rest
- Dual ramp



model 350-10-8

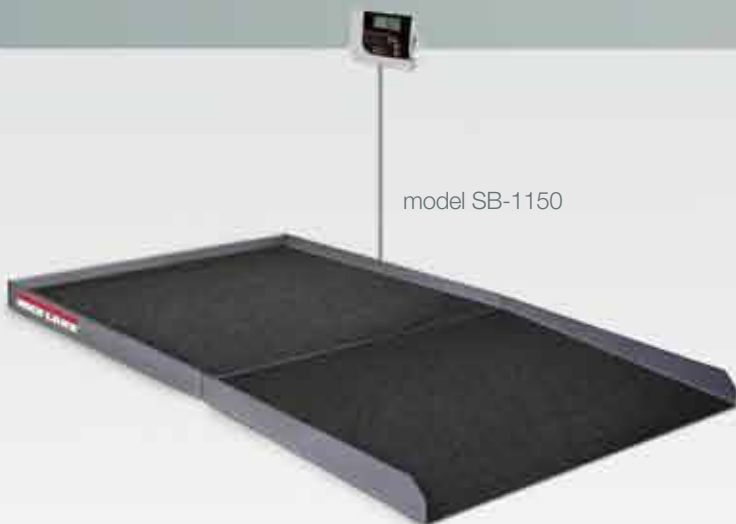


model 350-10-7

Options/Accessories

- AC adaptor

# Rice Lake **wheelchair** scales



model SB-1150

<b>Capacity</b>	1000lb (450kg)
<b>Graduations</b>	0.2lb (0.1 kg)

THE HEAVY-DUTY SB-1150 BARIATRIC SCALE easily accommodates wheelchairs with its large platform size and easy access ramp. To maximize safety, the scale and ramp are equipped with a non-skid rubber surface and guide rails on the sides.

## **Bariatric/Wheelchair Scale SB-1150** Standard Features



- 36 in W x 36 in L - 1,000lb mild steel painted scale with anti-slip rubber surface and three-sided safety rails
- Access ramp 36 in W x 28.5 in L with anti-slip rubber surface
- Motiontrap (movement compensation technology)
- Large 1 inch liquid crystal display (LCD)
- EMR capable, USB
- Push-button or manual entry of tare weight
- Unit of measure: lb only, kg only, lb/kg
- 10ft interface cable from scale to indicator
- Powered by 6 AA batteries (included)
- BMI (body mass index) function
- Hold function

## Options/Accessories

- AC adaptor



model SD-1150-WP

<b>Capacity</b>	1000lb (450kg)
<b>Graduations</b>	0.2lb (0.1 kg)

*Scale is flush mounted with the floor.*

THE SD-1150-WP DIALYSIS WHEELCHAIR SCALE is ideal for dialysis clinics. Large 36 in x 36 in 1,000lb mild steel platform easily accommodates dialysis chairs as the scale is mounted.

## **Dialysis Scale SD-1150-WP** Standard Features



- 36 in W x 36 in L - 1,000lb mild steel painted scale with anti-slip rubber surface and pit frame
- 36 in H x 30 in L handrail and mounting hardware
- Motiontrap (movement compensation technology)
- Large 1 inch liquid crystal display (LCD)
- EMR capable, USB
- Push-button or manual entry of tare weight
- Unit of measure: lb only, kg only, lb/kg
- 10ft interface cable from scale to indicator
- Powered by 6 AA batteries (included)
- BMI (body mass index) function
- Hold function

## Options/Accessories

- AC adaptor



Lada sin costo **01 800 026 5331**  
**ventas@akbasculas.com**  
**www.akbasculas.com**

**¡Atendemos en cualquier punto de la república!**