

TOTAL WEIGHING SOLUTION™

CL5000J SERIES

Label Printing Scale

SPECIFICATIONS

Model	CL5000J		
Max. capacity(kg)	3/ 6	6/ 15	15/ 30
Readability(g)	1/ 2	2/ 5	5/ 10
Tare range(kg)	-2.999	-5.998	-9.995
External resolution	1/3,000(Dual interval)		
Display digit	4/5/6/6 (Pretare/Weight/Unit price/Total price)		
Display type	4 VFD displays		
Printer speed	75mm/ sec		
Printer resolution	202dpi		
Label Size(mm)	Wide: 40-64 / Length : 30-120		
Power source	AC 100-240V, 50/60Hz		
Operating temperature	-10℃ ~ 40℃		
Platter size(mm)	382(W) x 246(D)		
Product weight(kg)	B type	10.5	
	P type	12	
	R type	11.2	

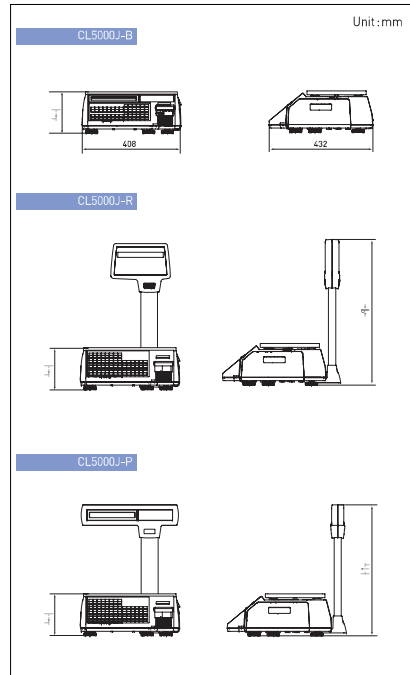
FEATURES

- Memory capacity
 - 6,000PLUs with 1,000 direct ingredients(300 byte/pcs) and 100 indirect ingredients(400 byte/pcs)
- Speed key
 - Standard : 96 speed keys (48keys x 2(shift key))
 - Pole: 144 speed keys (72keys x 2(shift key))
- High-speed thermal printer
- Fast PLU down load : 50PLUs/sec
- Wired / Wireless network
- Cateridge loading type label installation
 - 40 free label format design

OPTION

- Wireless LAN card

DIMENSIONS



RETAIL WEIGHING SOLUTION™



Four VFD display



Cartridge loading type label installation



Direct PLU keys

CL5000J SERIES

Label Printing Scale

CL5000J series are the most effective business network solution with economic price.

- Flexible & Reliable network system (wired/wireless)
- Fast network downloading and user friendly PC software.



Lada sin costo **01 800 026 5331**
ventas@akbasculas.com
www.akbasculas.com
 ¡Atendemos en cualquier punto de la república!

BASCULAS



CL5000J SERIES

TOTAL WEIGHING SOLUTION™

Label Printing Scale

FEATURES

Display - VFD

The VFD display is used for displaying 4 digits of tare value, 5 digits of weight value, 6 digits of unit price and 6 digits of total price.



Menu System

Unique 4 digit 'Menu Code' entry pin point the desire program field.

ex) Menu Code "1120" is for Editing PLU name.

PLU specification & Memory

2MB memory can hold up to 6000 PLUs with commodity name or ingredient.

Ingredients

- 1,000 Direct Ingredients (300byte/pcs)
- 100 Indirect Ingredients (400byte/pcs)



Printer mechanism

High speed printer(75mm/sec) cartridge loading type label installation with high quality ROHM printer head (50km/5x107pulses) makes so much easier to replace a new roll of label.



Label & BarCode Types

CL5000J allows full graphic label design! It provides 40 free label formats.

- Barcode types
- EAN-13, I2OF5, CODE128C



Communication

CL5000J is built in TCP/IP (Wired) network card and RS-232C interface used to connect with PC or printer.

- IEEE802.11G Ethernet supports data transmission speed of 50 PLUs/sec



Product Line - Up

CL5000J Series are suitable for any circumstance market sizes with economic price.



CL5000J-B

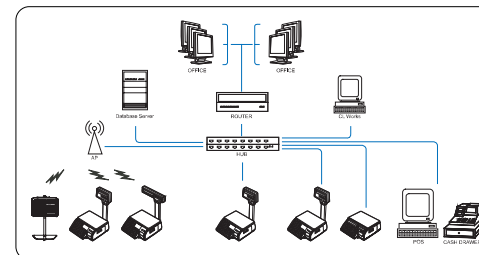


CL5000J-P



CL5000J-R

Network System



Wired / Wireless Network

- ▶ TCP/IP Communication Protocol
- ▶ IEEE802.11G Specification Wireless Network
- ▶ 64/128 bit WEP Security system
- ▶ Multi & Wired/Wireless Network (Local network, Internet service)
- ▶ Network structure for
 - Large, medium and small independent markets, hyper markets

PC Software - CL works

User-Friendly Scale management software

PLU programming, Store data, Sales report, label editor, key- pad editor and much more, control all the program data by CL works program.



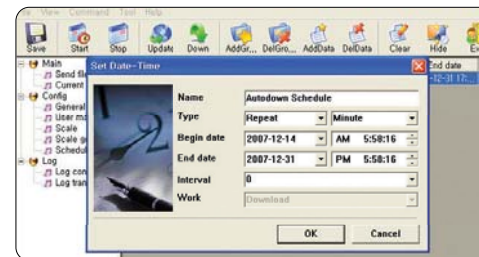
PLU Editor
Enable to easy PLU control
Allows PLUs Management by Excel



Label Editor
20 modifiable Label Formats
Easy downloading of Label formats



Keypad Editor
Easy to setup and download
key design Colour Image
Keypad supported



Middleware system - Headquarter managing solution

- ▶ Datatransmission time scheduling
- ▶ Remote database server accessing
- ▶ Multiple scale report management

