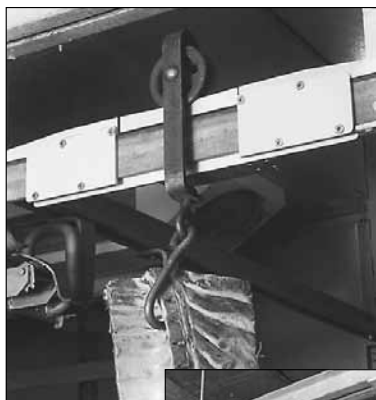


MS200 & MS202 Portable & Permanent Monorail Scales



STANDARD FEATURES

- 8 inch long live rail designed to weigh one trolley at a time
- 750 lb x .5 lb resolution in both portable and permanent models
- Available for rail sizes 3/8 in x 2 1/2 in or 1/2 in x 2 1/2 in
- Requires less than 41 inches of straight rail to install (14 inch between rail hangers for permanent model)
- Zinc-plated, steel construction
- High accuracy, stainless steel load cell
- 25 ft of load cell cable for flexible installation
- Slightly recessed live rail for the trolley roller provides stable weighments

SPECIFICATIONS

MS200/MS202 Construction:

Zinc-plated steel construction, stainless steel hardware

Load Cell Construction:

Stainless steel

Bridge Resistance:

350 ohms nominal

Rated Output:

2 mV/V

Nonlinearity:

0.03% full scale

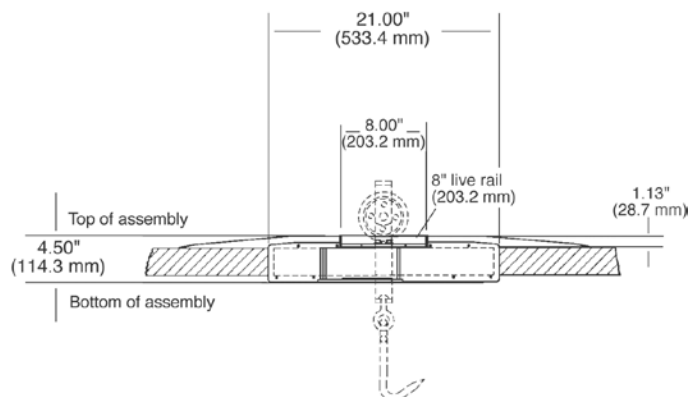
Approvals:

NTEP CC 90-003, Class III, nmax 1500

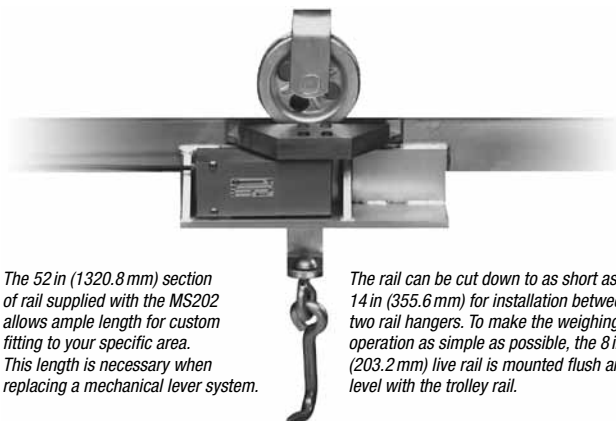
APPROVALS



MS200/MS202 Dimensions



MS202 Permanent Monorail Scale



The 52 in (1320.8 mm) section of rail supplied with the MS202 allows ample length for custom fitting to your specific area. This length is necessary when replacing a mechanical lever system.

The rail can be cut down to as short as 14 in (355.6 mm) for installation between two rail hangers. To make the weighing operation as simple as possible, the 8 in (203.2 mm) live rail is mounted flush and level with the trolley rail.



Lada sin costo **01 800 026 5331**

ventas@akbasculas.com

www.akbasculas.com

¡ Atendemos en cualquier punto de la república !